

DID YOU KNOW?

about our...



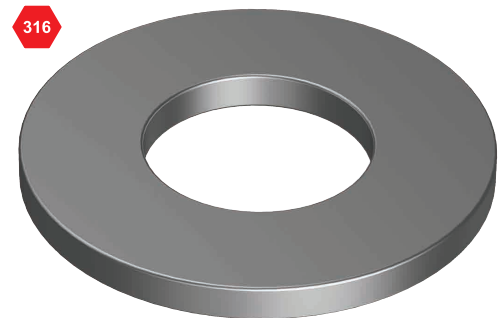
**MORE
SIZES +**

DIN125A Washer 316 Stainless

DIN125A WASHER 316 STAINLESS / DIN 125A / A4

Part	Size	OD (mm)	ID (mm)	Thickness (mm)	Pack Qty
WR16TM02	M2	5.0	2.3	0.3	200
WR16TM025	M2.5	6.0	2.8	0.5	200
WR16TM03	M3	7.0	3.3	0.5	200
WR16TM05	M5	10.0	5.4	1.0	200
WR16TM06	M6	12.5	6.5	1.6	100
WR16TM08	M8	16.0	8.5	1.6	100
WR16TM10	M10	20.0	10.7	2.0	100
WR16TM12	M12	24.0	13.2	2.5	100
WR16TM16	M16	30.0	17.2	3.0	100
WR16TM18	M18	34.0	19.2	3.0	100
WR16TM20	M20	37.0	21.2	3.0	100
WR16TM22	M22	39.0	23.2	3.0	100
WR16TM24	M24	44.0	25.2	4.0	50
WR16TM27	M27	50.0	28.2	4.0	25
WR16TM30	M30	56.0	31.2	4.0	20
WR16TM33	M33	60.0	34.3	5.0	20
WR16TM36	M36	66.0	37.3	5.0	10
WR16TM39	M39	72.0	40.3	6.0	10
WR16TM42	M42	78.0	43.3	7.0	10
WR16TM48	M48	92.0	50.3	8.0	10

**NEW
SIZES +**



Disclaimer: While every reasonable effort has been made to ensure that this document is correct at the time of printing, Hobson Engineering®, its agencies and employees, disclaim any and all liability to any person in respect of anything or the consequences of anything done or omitted to be done in reliance upon the whole or any part of this document.

Bolt Tension | Anti-Vibration | Product Reliability | Traceability

hobson.com.au **QUALITY FASTENERS SINCE 1935**

